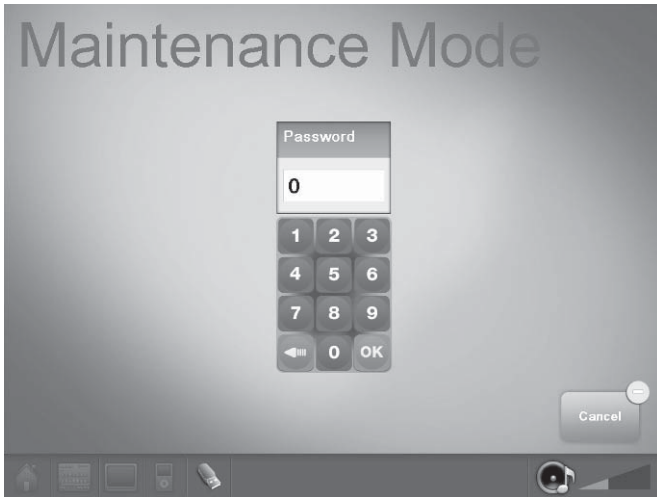


Service Menu

To access Maintenance Mode:

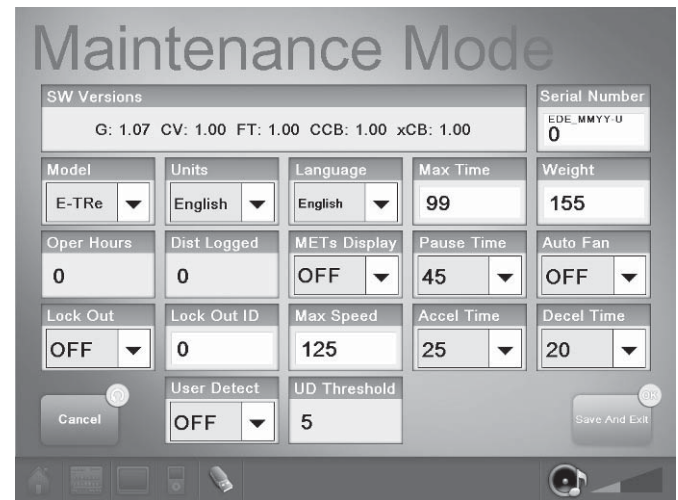
1. While in **Home Screen**, press and hold “**VOL +, CH/TRK +, and 3**” simultaneously.
2. A pop up window appears requesting a Password.
3. Enter the Managers Password **218** to gain access to the **Service Menu**.



Once in Service Menu you can open the following menus:

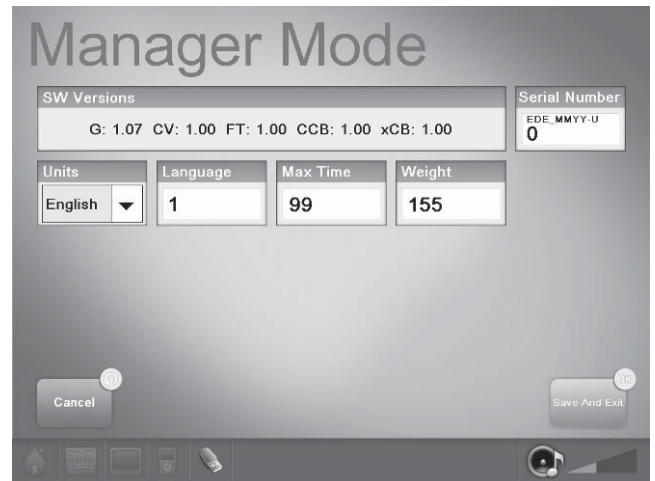
MAINTENANCE MODE - while in Maintenance Mode, the following information can be access and/or modified:

- SW versions - The latest software version loaded in the system.
- Serial Number - The last five digits of the display serial number.
- Model - The product type (treadmill, bike, etc.)
- Units - The units of measurement English or Metric
- Language - The language selected at setup
- Max Time - The maximum time allowed for a single workout
- Weight - The default user weight used for Quick Start programs
- Oper Hours - The cumulative amount of usage hours
- Dist Logged - The cumulative distance logged
- METs Display - Allows the manager/owner to select the METs Availability (ON or OFF)
- Pause Time - Allows the manager/owner to select the length of the pause (30, 45, 60, 90, or 120 seconds)
- Auto Fan - Allows the manager/owner to select the Auto Fans Functionality (ON or OFF)
- Lock out - Allows the manager/owner to select the Lock Out Function (ON or OFF)
- Max Speed - English (From 5.0 to 15.0) or Metric (From 5.0 to 24.1)
- Accel Time - Allows the manager/owner to set Acceleration Time of treadmill (From 25 to 60)
- Decel Time - Allows the manager/owner to set Deceleration Time of treadmill (From 20 to 60)
- User Detect - Availability (ON or OFF)
- UD Threshold - Displays user detect feature threshold values.



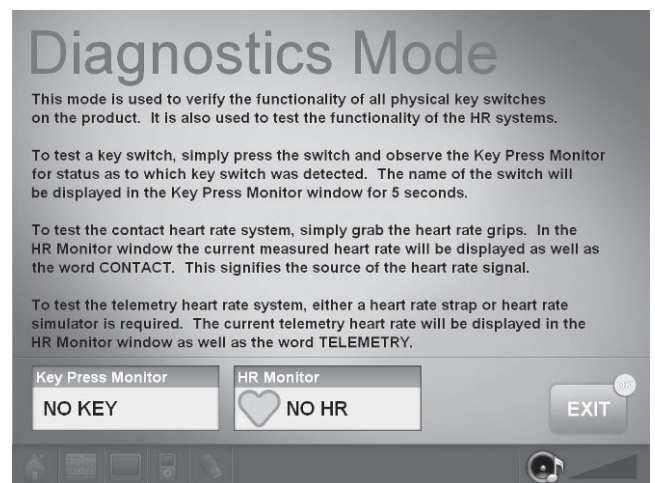
MANAGER MODE

Allows the change of Units, Language, Max Time and Weight.



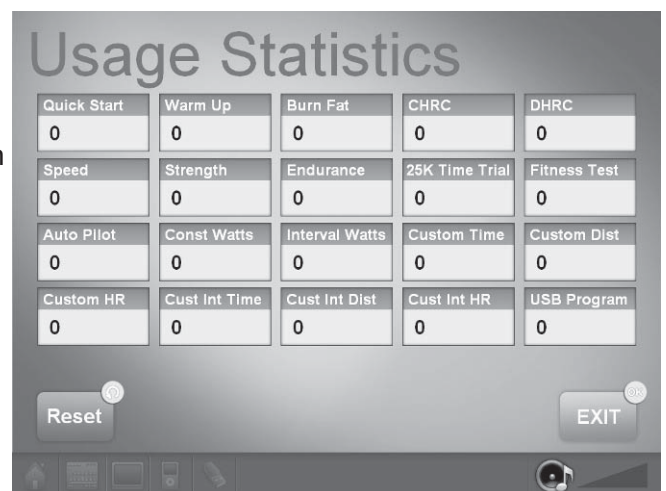
DIAGNOSTICS MODE

Allows the test of all hard keys, and the telemetry and contact heart rate.



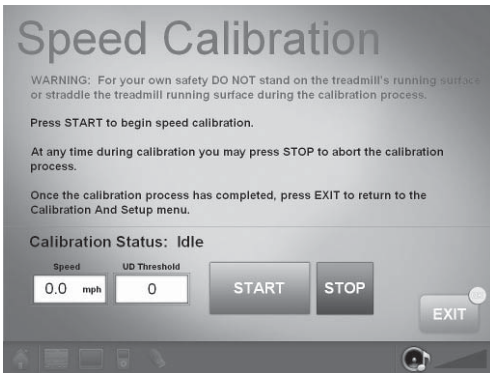
USAGE STATISTICS

Displays the total number of times a program has been used.



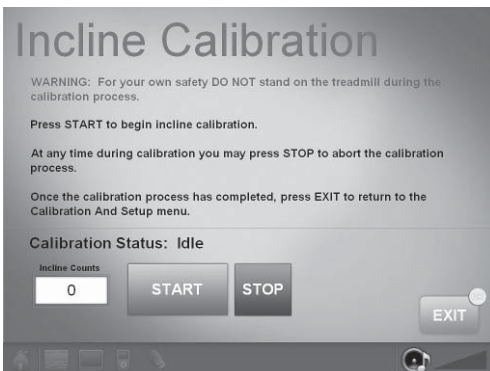
CALIBRATION AND SETUP

The Calibration and Setup screen allows you to calibrate your equipment, update software, and scan the TV channels.



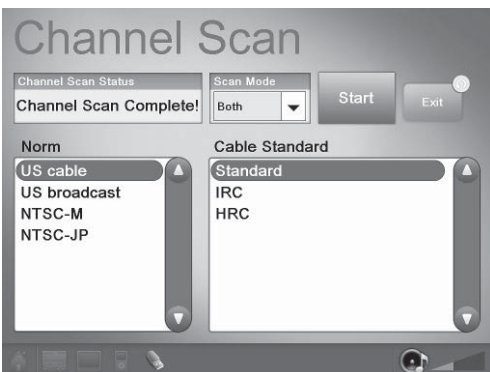
- **Speed Calibration** - calibrates the speed of the treadmill:

1. Select *Speed Calibration* on the Calibration and Setup screen.
2. Press **START** to begin the calibration.
3. After the Speed Calibration is completed, press **EXIT**; The **Calibration And Setup** screen appears.
4. Press **Cancel** to exit and go back to the **Home Screen**.
5. The Speed Calibration has been completed.



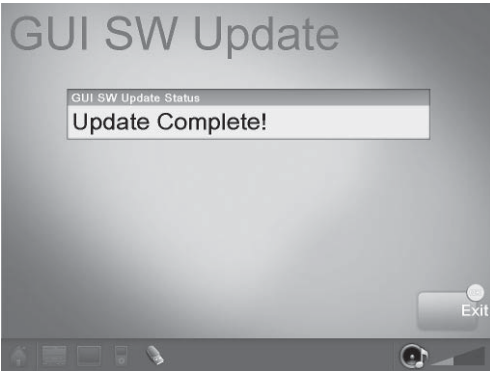
- **Incline Calibration** - calibrates the incline of the treadmill:

1. Select *Incline Calibration* on the Calibration and Setup screen.
2. Press **START** to begin the calibration.
3. After the Incline Calibration is completed, press **EXIT**; The **Calibration And Setup** screen appears.
4. Press **Cancel** to exit and go back to the **Home Screen**.
5. The Incline Calibration has been completed.



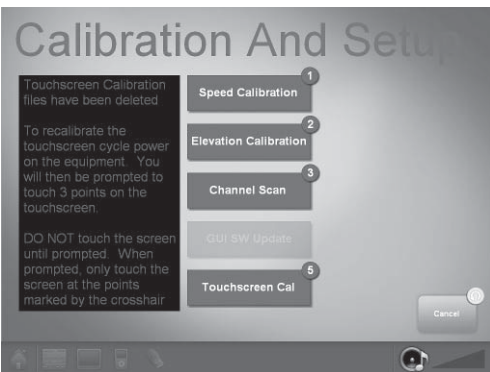
- **Channel Scan** - scans the TV signal:

1. Select *Channel Scan* on the Calibration and Setup screen.
2. Select the signal type from the **Scan Mode** (Both Analog and Digital are set as the default)
3. Select the **Norm** (NTSC-M, PAL, etc)
4. Select **Cable Standard** (depending on country of installation)
5. Press **START** to begin the scan.
6. After the Channel Scan is completed, press **EXIT**; The **Calibration And Setup** screen appears.
7. Press **Cancel** to exit and go back to the **Home Screen**.
8. The channel scan has been completed.



GUI SW Update - allows the manager to update the GUI software. If for any reason you need to update the GUI, follow these steps:

1. Connect the USB stick that contains the GUI file.
2. Wait until the USB source is recognized by the system.
3. Press VOL+, CH/TRK+ and 3 simultaneously on the Center Console keypad to access the Maintenance Mode Screen.
4. Select Calibration And Setup.
5. Press the *GUI Update* icon on the Calibration and Setup screen.
6. The GUI update will start automatically.
7. After the GUI update is completed, press **EXIT**; The **Calibration And Setup** screen appears.
8. Press **Cancel** to exit and go back to the **Home Screen**.
9. Cycle the equipment power.
10. You need to setup the system. See the *Assembly and Product Model Setup* section.



•**Touchscreen Calibration** - this menu lets you calibrate your Touch Screen. The touch screen is calibrated before it leaves the factory. If for any reason you need to recalibrate the unit, follow these steps:

1. Press the *Touchscreen Cal* icon. A message would appear indicating the Touchscreen files have been deleted.
2. Cycle the equipment power.
3. Once the system power up, you will be prompt to touch 3 points on the *touch screen*.
4. **Do Not** touch the screen until prompted.
5. Touch the screen at the points marked by the crosshair.
6. After touching the 3 indicated points, the Touch Screen is will be calibrated.